



Between Flange Turbine Flow Meter Installation Manual



Simark Controls Ltd.

Calgary

Edmonton

Vancouver

Prince George

Head Office: 10509- 46 Street SE, Calgary, Alberta, Canada T2C 5C2

www.simark.com

Telephone (403) 236-0580

Fax (403) 279-6553

Toll-Free 1-800-565-7431



Calibration

The BF Series Turbine Flow Meter is precalibrated with water at the factory. The calibration factor tag is on the conduit hub of the meter and is in pulses per US Gallon. Any certified proving company can prove this meter.

Installation

Meters

The BF Turbine Flow Meter can be installed vertically or horizontally. The flow direction must correspond with the directional flow arrow stamped on the meter body. Throttling valves must not be installed upstream of the turbine flow meter.

- Clean all upstream flow lines
- Do not purge the lines with gas or air, with the meter installed
- Do not slug the meter with fluid
- Do not exceed maximum flow rates
- Do not exceed maximum pressure
- Do not exceed maximum temperature
- Avoid sharp blows to the meter body.

Procedure

1. The meter requires a straight section of pipe the same size as the end connections on either side of the meter. A **10-diameter length** of straight unrestricted pipe must be upstream and a **5-diameter length** of straight unrestricted pipe must be downstream of the flow meter.

Example:

Meter Size – 2"

Pipe Size – 2"

Meter Run - 10x2" = 20" Upstream

Meter Run - 5x2" = 10" Downstream

2. Install the lower bolts and body centering rings.
3. Lower the meter between the line flanges until it rests firmly on the body centering rings, install all threaded bolts, nuts, and washers to connect the upstream and downstream flanges.
4. Install the gaskets, bolts, washers and nuts; tighten the nuts to prevent leakage.
5. Thread the magnetic pickup into the meter until it is hand tight, and then back it off ¼ turn. Tighten jam nut to prevent vibration.

Parts List

Rotor and Vane Kits

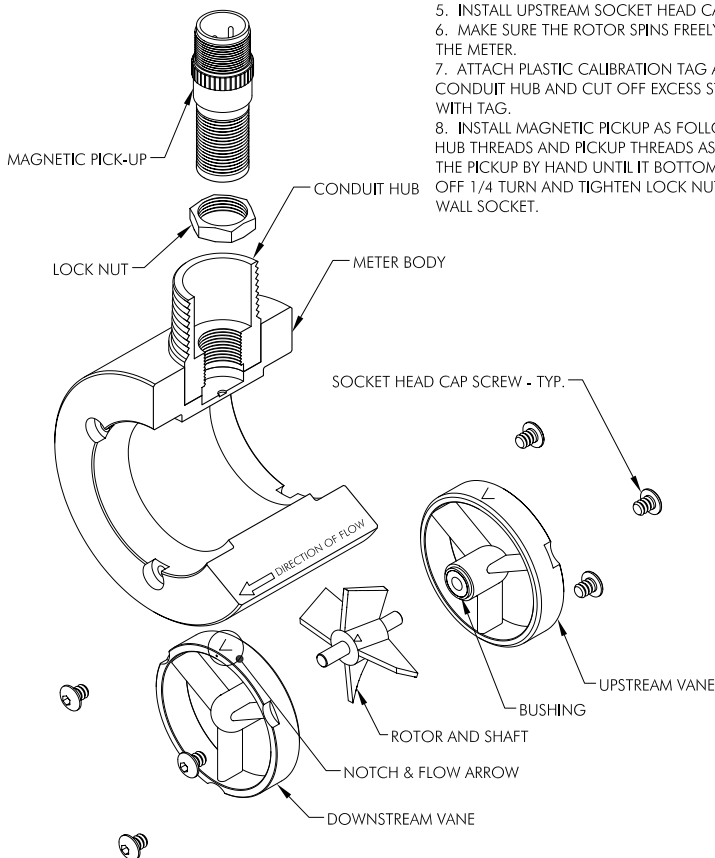


Simark Controls offers a broad line of turbine Flow Meter Rotor and Vane Kits designed for Simark Turbine Flow Meters. The Simark Rotor and Vane Kits are also compatible for use with many other popular manufactures' Turbine Flow Meters. Please contact Simark Controls to verify compatibility with your existing meters. The kits are available for flow ranges of .3 to 3500 GPM. Simark kits fit meter sizes of .375" to 10".

Simark Controls repair kits are manufactured to the highest quality standards. The repair kit support vanes are manufactured of 316SS, rotor is CD4MCU, sleeve bearings and shaft are tungsten carbide and the thrust ball is ceramic. The kits are calibrated in pulses per US gallon for each kit. The kits may be used in a wide range of applications including: oilfield water flood, production, well servicing, pipelines, mining, chemicals, food and beverage industry and most other liquid applications.

KIT REMOVAL

1. REMOVE MAGNETIC PICKUP BY LOOSENING LOCK NUT USING 3/4" THIN WALL SOCKET, THEN UNSCREW FROM METER BODY. THIS PROCEDURE WILL HELP TO PREVENT PICKUP DAMAGE DURING THE REPAIR PROCEDURE.
2. REMOVE SOCKET CAP SCREWS FROM BOTH ENDS OF METER USING HEX KEY.
3. REMOVE UPSTREAM AND DOWNSTREAM VANES, TAPPING WITH SOFT ROD IF NECESSARY TO DRIVE OUT VANES.
4. REMOVE ROTOR FROM BODY.
5. CLEAN THE METER BODY BORE AS REQUIRED BRINGING IT BACK TO A LIKE NEW CONDITION.
6. CLEAN SCREW HOLES AND COUNTER BORE FOR VANE TO ALLOW THE VANE TO PROPERLY SEAT.



KIT INSTALLATION

1. INSTALL DOWNSTREAM VANE SO ARROW ON VANE CORRESPONDS WITH DIRECTIONAL ARROW ON THE METER BODY. THE DIRECTIONAL ARROW AND NOTCH ON THE VANE SHOULD ALIGN WITH THE TOP OF THE METER BODY, WHERE THE CONDUIT HUB IS LOCATED.
2. INSTALL THE DOWNSTREAM SOCKET HEAD CAP SCREWS.
3. INSTALL ROTOR BEING SURE THE ARROW IS PROPERLY ALIGNED, AND THE SHAFT SEATED IN THE VANE BUSHING.
4. INSTALL UPSTREAM VANE, ALIGNING THE VANE THE SAME AS THE DOWNSTREAM VANE. SPIN THE ROTOR TO ALLOW SHAFT TO EASILY ENTER THE VANE BUSHING. DO NOT USE FORCE TO PUSH THE VANE BEARING OVER THE ROTOR SHAFT.
5. INSTALL UPSTREAM SOCKET HEAD CAP SCREWS.
6. MAKE SURE THE ROTOR SPINS FREELY BEFORE INSTALLING THE METER.
7. ATTACH PLASTIC CALIBRATION TAG AROUND THE CONDUIT HUB AND CUT OFF EXCESS STRAP LENGTH FLUSH WITH TAG.
8. INSTALL MAGNETIC PICKUP AS FOLLOWS: CLEAN PICKUP HUB THREADS AND PICKUP THREADS AS NEEDED. SCREW IN THE PICKUP BY HAND UNTIL IT BOTTOMS OUT, THEN BACK OFF 1/4 TURN AND TIGHTEN LOCK NUT WITH 3/4" THIN WALL SOCKET.

Replacement Rotor and Vane Kits

Part Number	Size
5.037	3/8 x 1
5.050	1/2 x 1
5.075	3/4 x 1
5.087	7/8 x 1
5.101	1 x 1
6.037	3/8 x 2
6.050	1/2 x 2
6.075	3/4 x 2
6.087	7/8 x 2
6.101	1 x 2
6.150	1.5 x 2
6.250	2 X 2
6.350	3 X 3
6.450	4 X 4
6.650	6 X 6
6.850	8 X 8
6.10500	10 X 10

Hardware Kits (Raised Face Flange)

End Connection (Flange Size)	150 #	300 #	600 #	900 #	1500 #
1"	1HK150*	1HK300/600	1HK300/600	1HK900/1500	1HK900/1500
2"	2HK150	2HK300/600*	2HK300/600*	2HK900/1500*	2HK900/1500*
3"	3HK150	3HK300/600*	3HK300/600*	3HK900	3HK1500*
4"	4HK150	4HK300	4HK600	4HK900	4HK1500*
6"	6HK150	6HK300	6HK600	6HK900	6HK1500*
8"	8HK150	8HK300	8HK600	8HK900	8HK1500
10"	10HK150	10HK300	10HK600	10HK900	10HK1500

Part Number	Description
PUEXT	Pickup Adapter Extension

* Required for : 1" 150# flange
2" 300/600# flange
2" 900/1500# flange
3" 300/600# flange
3" 1500# flange
4" 1500# flange
6" 1500# flange

Hardware Kits (Ring Joint Flanges)

End Connection (Flange Size)	ANSI RATING	Part Number
1.5"	1500#	1.5RJHK1500
2"	900#	2RJHK900
2"	1500#	2RJHK1500
2"	2500#	2RJHK2500
3"	1500#	3RJHK1500

Note: Magnetic Pickup 4.304 is required for RJ Flanges

Centering Rings

End Connection (Flange Size)	150 #	300 #	600 #	900 #	1500 #
1"	1CR150	1CR300/600	1CR300/600	1CR900/1500	1CR900/1500
2"	2CR150	2CR300/600	2CR300/600	2CR900/1500	2CR900/1500
3"	3CR150	3CR300/600	3CR300/600	3CR900	3CR1500
4"	4CR150	4CR300	4CR600	4CR900	4CR1500
6"	6CR150	6CR300	6CR600	6CR900	6CR1500
8"	8CR150	8CR300	8CR600	8CR900	8CR1500

Magnetic Pickups

Part Number	Size
4.5051	For use with 3/8" x 2" Between Flange Meter only
4.5050	¾" and smaller
4.303	7/8" and larger
4.304	For RJ Meters only

Warranty

WARRANTY-LIMITATION OF LIABILITY: Seller warrants only title to the product, supplies, and materials and that, except to software, the same are free from defects in workmanship and materials for a period of one (1) year from the date of delivery. Seller does not warrant that software is free from error or that software will run in an uninterrupted fashion. Seller provides all software "as is". THERE ARE NO WARRANTIES, EXPRESSED OR IMPLIED, OF MERCHANTABILITY, FITNESS OR OTHERWISE WHICH EXTEND BEYOND THOSE STATED IN THE IMMEDIATELY PRECEDING SENTENCE. Seller's liability and Purchaser's exclusive remedy in any case of action (whether in contract, tort, breach of warranty or otherwise) arising out of the sale or use of any product, software, supplies, or materials on their return to Seller or, at Seller's option, to the allowance to the customer of credit for the cost of such items. In no event shall Seller be liable for special, incidental, indirect, punitive or consequential damages. Seller does not warrant in any way products, software, supplies, and materials not manufactured by Seller, and such will be sold only with the warranties that are given by the manufacturer thereof. Seller will pass only through to its purchaser of such items the warranty granted to it by the manufacturer.

Notes



